

# ACCIDENT PREVENTION & LOCKOUT TAGS

## CUSTOM TAGS MADE EASY!

- No set-up fees
- Any print colors
- Full-color graphics and images, including design, image, and logo
- Choose a message with any letter font
- Available barcoding, sequential numbering, and tear-off perforations – **Call us for details**



## HOW TO ORDER CUSTOM TAGS

### STEP 1: MESSAGE, DESIGN

Develop your tag – provide message, layout, design and color.

### STEP 2: SELECT MATERIAL AND SIZE

Consider tag placement, intended application, and environment.

### STEP 3: FINISHING OPTIONS

Determine how you will install the tag. Call us for available options.

### STEP 4: DECIDE ON QUANTITY

No need to order huge quantities – You can order as few as 25.

Call, e-mail, or fax us to place your order!

### SIZES:

4 1/4" x 2 1/8"

5 3/4" x 3 1/4"

8 1/2" x 3 7/8"

Other sizes upon request



## PF-CARDSTOCK TAGS

Tear-resistant and waterproof tags last longer than standard cardstock tags.

Tags are pulp-free – no wood pulp or paper content – unlike regular cardstock. They are pliable, yet will not rip or breakdown in moisture.

Tags do not tear readily when tugged on. Ideal for indoor use and short term outdoor exposure. The scuff-resistant, matte surface is easy to write on.

- 10-mil polyolefin-based material
- Thin and flexible
- Top has 3/8" plain hole

## RP-PLASTIC TAGS & HS-LAMINATE TAGS

Durable tag withstands pulls and tears in dirt and grease environments.

Plastic tags are water-resistant – to withstand weather conditions.

The rigid plastic is flexible, yet will not readily break down over a wide temperature range. Good for indoors and outdoors use. Writable surface is abrasion resistant.

- 15-mil rigid plastic material
- Flexible, yet durable – withstands stretching and ripping
- Top has 3/8" hole reinforced with metal grommet to prevent pull off

## HS-LAMINATE TAGS

Tags are designed to withstand tough and abusive conditions.

HS-Laminate is a composite of all poly materials hard sealed on both sides with no edge seams. Matte surface is scratch resistant, yet easy to write on. Waterproof tags are ideal for extreme weather conditions.

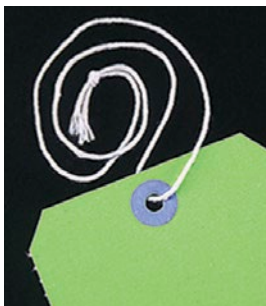
- Tear-proof, weather-proof, chemical-resistant material withstands dirt and grease environments
- Thick laminate stands up to abuse and rough handling
- 3/8" top hole is reinforced with a pull-proof, metal grommet

## TAG FINISHING OPTIONS



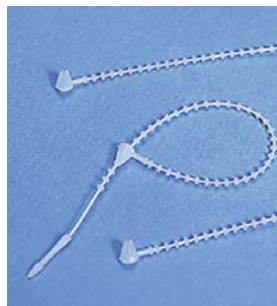
### STRING TIES

- 12" string ties
- Available in Bundles of 100



### BEADED NYLON TIES

- 5" white nylon 6/6
- Self locking design with 18-lb pull strength



### SNAP HOOK LOOP

- Zinc-plated steel loop
- Inside dimensions: 1 1/2" x 2 13/16"



Model No.	Price/Bundle
SAU888	

Model No.	Qty	Price/Pkg.
SAU890	100/Pkg.	
SAU889	1000/Pkg.	

Model No.	Qty.	Price/Pkg.
SAU891	100/Pkg.	



## TAG HOLDERS

- Hold a pack of tags in the location they are needed
- Plastic single-pocket tag holder
- 9" H x 4" W aluminum back
- Four corner mounting holes
- Adhesive mounting strips included



Model No.	Price/Each
SAT748	